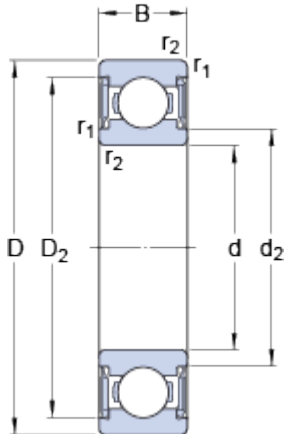


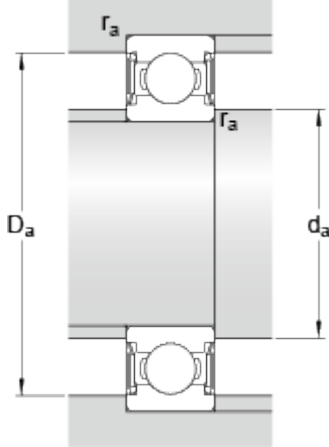
# W 61904-2RS1

## Dimensions



d		20	mm
D		37	mm
B		9	mm
d <sub>2</sub>	≈	23.65	mm
D <sub>2</sub>	≈	33.5	mm
r <sub>1,2</sub>	min.	0.3	mm

## Abutment dimensions



d <sub>a</sub>	min.	22	mm
d <sub>a</sub>	max.	23.5	mm
D <sub>a</sub>	max.	35	mm
r <sub>a</sub>	max.	0.3	mm

## Calculation data

Basic dynamic load rating	C	5.53	kN
Basic static load rating	C	3.65	kN
Fatigue load limit	P <sub>u</sub>	0.156	kN
Limiting speed		12000	r/min
Calculation factor	k <sub>r</sub>	0.025	
Calculation factor	f	14.7	

## Mass

Mass bearing		0.035	kg
--------------	--	-------	----