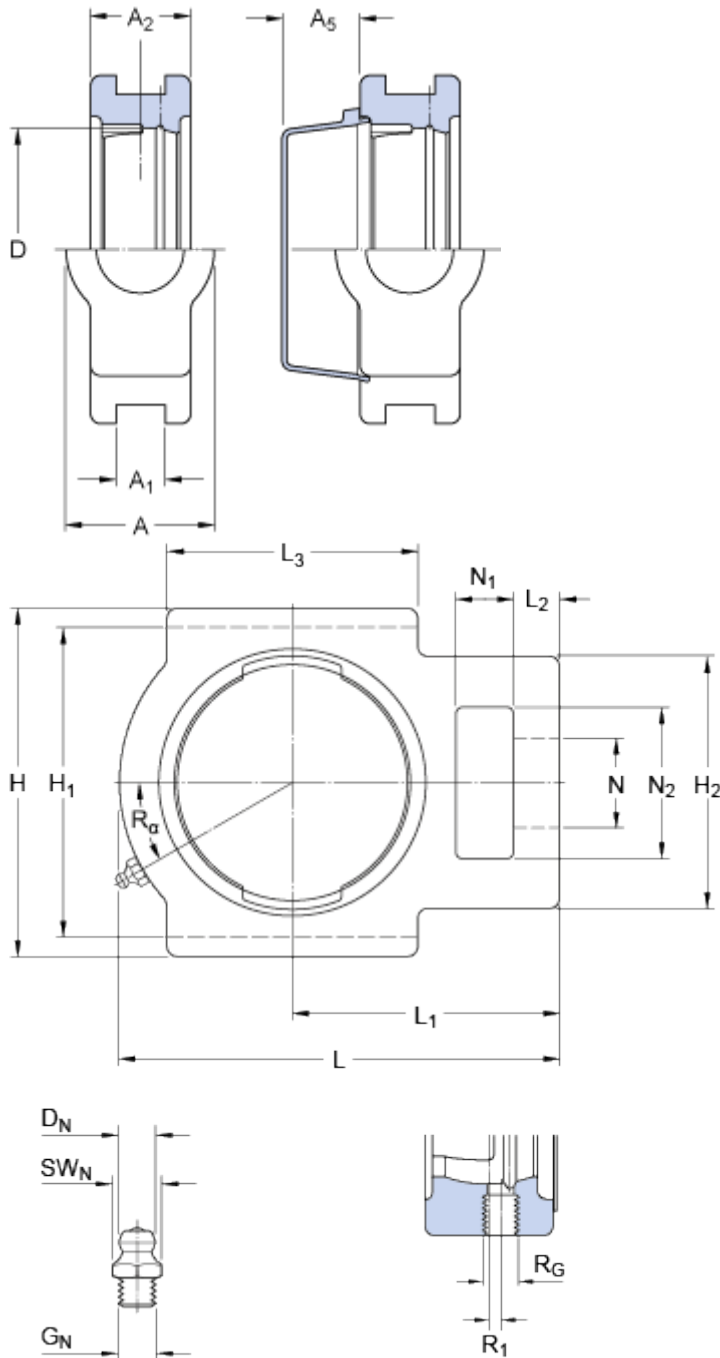


# TU 511 M

## Dimensions



D	100	mm
A	64	mm
A <sub>1</sub>	27	mm
A <sub>2</sub>	41	mm
A <sub>5</sub>	34	mm
H	146	mm
H <sub>1</sub>	130	mm
H <sub>2</sub>	102	mm
L	171	mm
L <sub>1</sub>	106	mm
L <sub>2</sub>	19	mm
L <sub>3</sub>	95	mm
N	35	mm
N <sub>1</sub>	25	mm
N <sub>2</sub>	64	mm

## Threaded hole

R <sub>G</sub>	1/4-28 UNF
R <sub>1</sub>	5 mm
R <sub>α</sub>	30 °

## Grease fitting

D <sub>N</sub>	6.5	mm
SW <sub>N</sub>	7	mm
G <sub>N</sub>	1/4-28 SAE-LT	

## Mass

Mass housing	2.85	kg
--------------	------	----

## Appropriate products

End cover	<a href="#">ECY 211</a>
-----------	-------------------------

