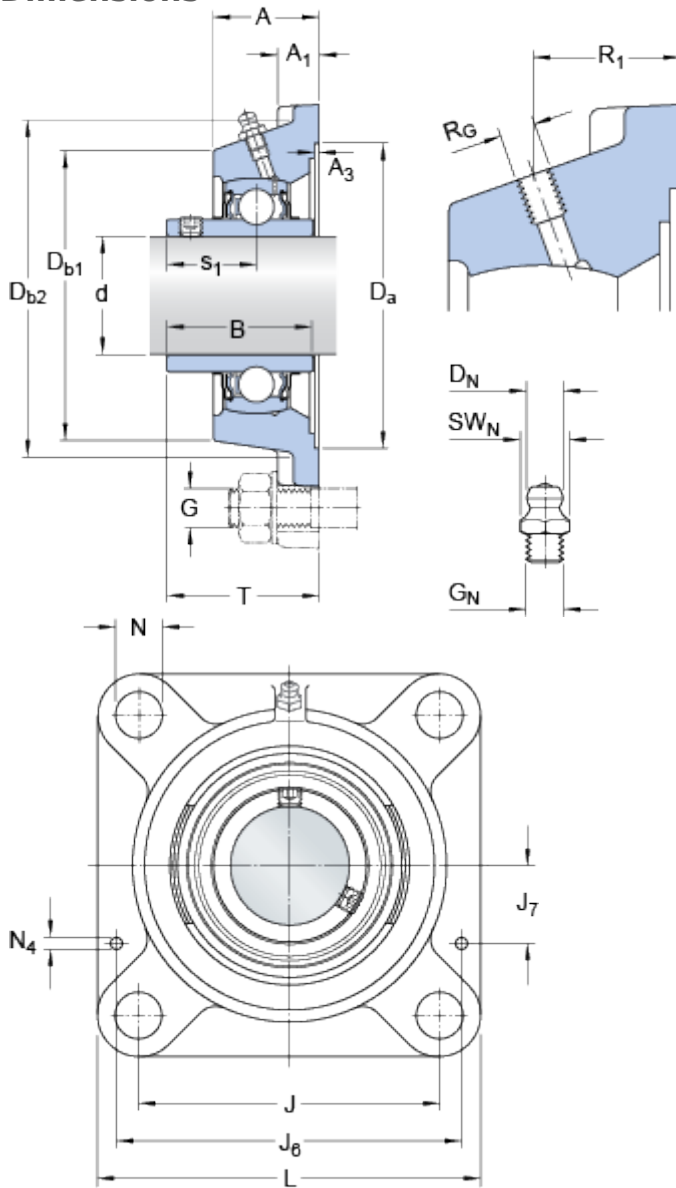


FYJ 90 TF

Housing material

Cast iron

Dimensions



| | | |
|-----------------|-----------|----|
| d | 90 | mm |
| D _a | H11 193.7 | mm |
| D _{b1} | 187 | mm |
| D _{b2} | 201 | mm |
| A | 63.5 | mm |
| A ₁ | 23 | mm |
| A ₃ | H14 3.2 | mm |
| B | 89 | mm |
| J | 187 | mm |
| L | 235 | mm |
| N | 23 | mm |
| s ₁ | 54 | mm |
| T | 94 | mm |

Threaded hole

| | |
|----------------|------------|
| R _G | 1/4-28 UNF |
| R ₁ | 40 mm |

Grease fitting

| | |
|-----------------|---------------|
| D _N | 6.5 mm |
| SW _N | 7 mm |
| G _N | 1/4-28 SAE-LT |

Dowel pins

| | |
|----------------|---------|
| J ₆ | 207 mm |
| J ₇ | 52.5 mm |
| N ₄ | 4 mm |

Calculation data

| | | | |
|---|----------------|------|-------|
| Basic dynamic load rating | C | 95.6 | kN |
| Basic static load rating | C | 72 | kN |
| Fatigue load limit | P _u | 2.7 | kN |
| Limiting speed (with shaft tolerance h6) | | 2000 | r/min |

Mass

| | | |
|-------------------|------|----|
| Mass bearing unit | 10.6 | kg |
|-------------------|------|----|

Mounting information

| | | | |
|---|----------------|---------|-----|
| Thread grub screw | G ₂ | M12x1.5 | |
| Hexagonal key size for grub screw | N | 6 | mm |
| Recommended tightening torque for grub screw | | 28.5 | N·m |
| Recommended diameter for attachment bolts, mm | G | 20 | mm |
| Recommended diameter for attachment bolts, inch | G | 0.75 | in |

Included products

| | |
|---------|----------------------------|
| Housing | FYJ 518 |
| Bearing | YAR 218-2F |