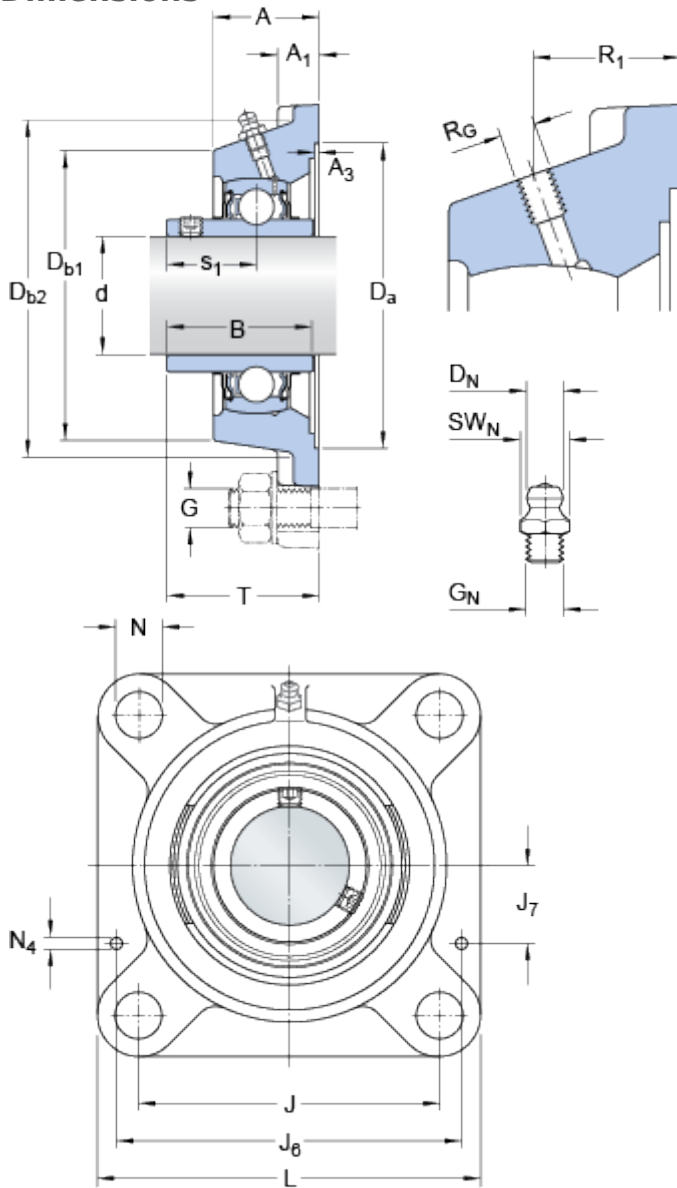


FYJ 100 TF

Housing material

Cast iron

Dimensions



d		100	mm
D _a	H11	215.9	mm
D _{b1}		207	mm
D _{b2}		221	mm
A		70	mm
A ₁		25	mm
A ₃	H14	3.2	mm
B		98.4	mm
J		210	mm
L		265	mm
N		27	mm
s ₁		63.4	mm
T		107.4	mm

Threaded hole

R _G		1/4-28 UNF	
R ₁		43	mm

Grease fitting

D _N		6.5	mm
SW _N		7	mm
G _N		1/4-28 SAE-LT	

Dowel pins

J ₆		233	mm
J ₇		55	mm
N ₄		4	mm

Calculation data

Basic dynamic load rating	C	124	kN
Basic static load rating	C	93	kN
Fatigue load limit	P _u	3.35	kN
Limiting speed (with shaft tolerance h6)		1900	r/min

Mass

Mass bearing unit		13.7	kg
-------------------	--	------	----

Mounting information

Thread grub screw	G ₂	M12x1.5	
Hexagonal key size for grub screw	N	6	mm
Recommended tightening torque for grub screw		28.5	N·m
Recommended diameter for attachment bolts, mm	G	24	mm
Recommended diameter for attachment bolts, inch	G	0.9375	in

Included products

Housing	FYJ 520
Bearing	YAR 220-2F