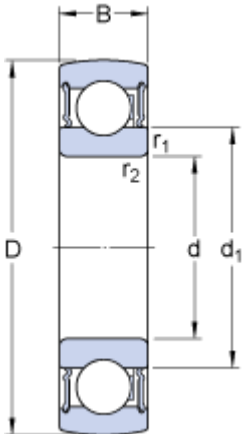


1726205-2RS1

Dimensions



d	25	mm
D	52	mm
d ₁	≈ 34.35	mm
r _{1,2}	min. 1	mm

Calculation data

Basic dynamic load rating	C	14	kN
Basic static load rating	C	7.8	kN
Fatigue load limit	P _u	0.335	kN
Limiting speed ¹⁾		8500	r/min
Calculation factor	f	14	

Mass

Mass complete bearing		0.12	kg
-----------------------	--	------	----

Associated products

Rubber seating ring		RIS 205	
---------------------	--	-------------------------	--