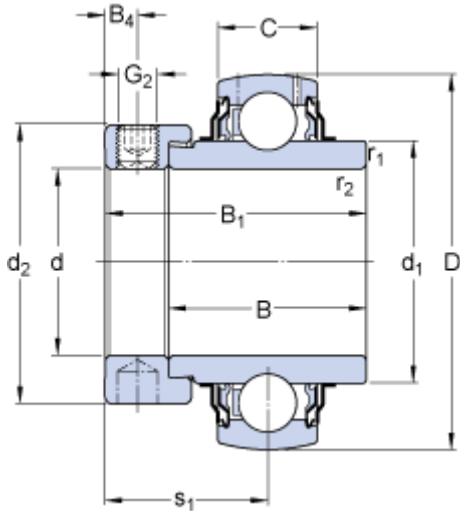


YEL 211-2F

Dimensions



d	55	mm
D	100	mm
B_1	71.4	mm
B	55.6	mm
C	25	mm
d_1	≈ 69.06	mm
d_2	74.5	mm
B_4	7.9	mm
$r_{1,2}$	min. 1	mm
s_1	43.6	mm

Calculation data

Basic dynamic load rating	C	43.6	kN
Basic static load rating	C	29	kN
Fatigue load limit	P_u	1.25	kN
Limiting speed ¹⁾		3600	r/min
Calculation factor	f	14	

Mass

Mass complete bearing		1.3	kg
-----------------------	--	-----	----

Mounting information

Thread grub screw	G_2	M10x1	
Hexagonal key size for grub screw	N	5	mm
Recommended tightening torque for grub screw		16.5	N·m