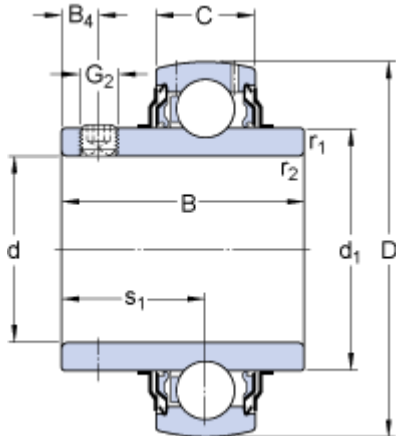


YAR 216-2F

Dimensions



d	80	mm
D	140	mm
B	77.8	mm
C	30	mm
d ₁	≈ 97.4	mm
B ₄	12	mm
r _{1,2}	min. 2	mm
s ₁	47.6	mm

Calculation data

Basic dynamic load rating	C	72.8	kN
Basic static load rating	C	53	kN
Fatigue load limit	P _u	2.16	kN
Limiting speed ¹⁾		2400	r/min
Calculation factor	f	15	

Mass

Mass complete bearing		2.5	kg
-----------------------	--	-----	----

Mounting information

Thread grub screw	G ₂	M10x1	
Hexagonal key size for grub screw	N	5	mm
Recommended tightening torque for grub screw		16.5	N·m