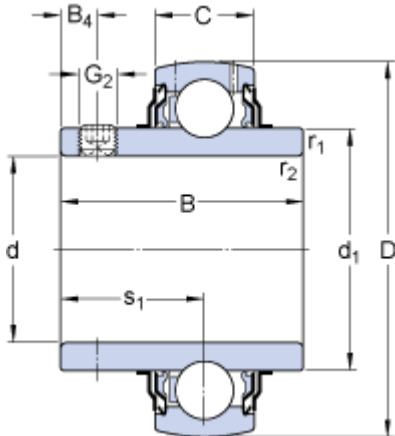


YAR 211-200-2F

Dimensions



d		50.8	mm
D		100	mm
B		55.6	mm
C		25	mm
d ₁	≈	69.06	mm
B ₄		9	mm
r _{1,2}	min.	1	mm
s ₁		33.4	mm

Calculation data

Basic dynamic load rating	C	43.6	kN
Basic static load rating	C	29	kN
Fatigue load limit	P _u	1.25	kN
Limiting speed ¹⁾		3600	r/min
Calculation factor	f	14	

Mass

Mass complete bearing		1.2	kg
-----------------------	--	-----	----

Mounting information

Thread grub screw	G ₂	3/8-24 UNF	
Hexagonal key size for grub screw	N	4.763	mm
Recommended tightening torque for grub screw		16.5	N·m