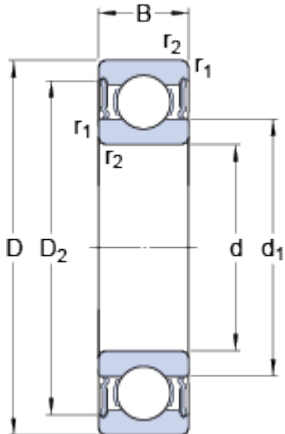


W 6301-2RS1

Dimensions



d		12	mm
D		37	mm
B		12	mm
d ₁	≈	19.3	mm
D ₂	≈	31.92	mm
r _{1,2}	min.	1	mm

Abutment dimensions



d _a	min.	17	mm
d _a	max.	19	mm
D _a	max.	32.5	mm
r _a	max.	1	mm

Calculation data

Basic dynamic load rating	C	8.32	kN
Basic static load rating	C	4.15	kN
Fatigue load limit	P _u	0.176	kN
Limiting speed		14000	r/min
Calculation factor	k _r	0.035	
Calculation factor	f	11.1	

Mass

Mass bearing		0.059	kg
--------------	--	-------	----