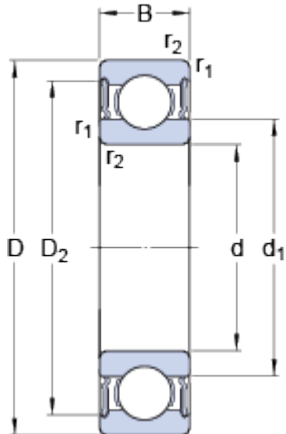


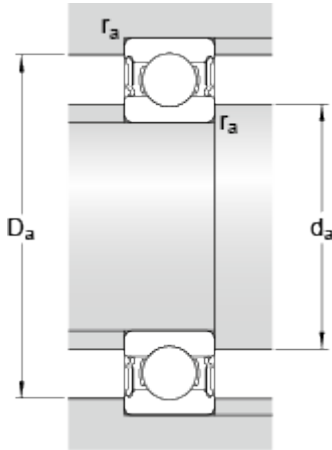
# W 6300-2RS1

## Dimensions



d		10	mm
D		35	mm
B		11	mm
d <sub>1</sub>	≈	17.7	mm
D <sub>2</sub>	≈	29.3	mm
r <sub>1,2</sub>	min.	0.6	mm

## Abutment dimensions



d <sub>a</sub>	min.	14	mm
d <sub>a</sub>	max.	17.5	mm
D <sub>a</sub>	max.	31	mm
r <sub>a</sub>	max.	0.6	mm

## Calculation data

Basic dynamic load rating	C	7.02	kN
Basic static load rating	C	3.4	kN
Fatigue load limit	P <sub>u</sub>	0.146	kN
Limiting speed		15000	r/min
Calculation factor	k <sub>r</sub>	0.035	
Calculation factor	f	11.2	

## Mass

Mass bearing		0.052	kg
--------------	--	-------	----