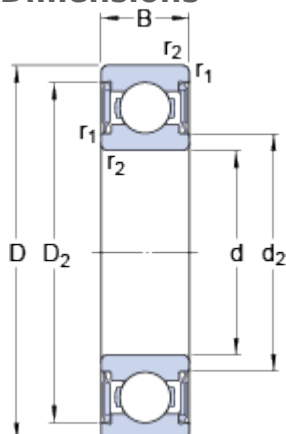


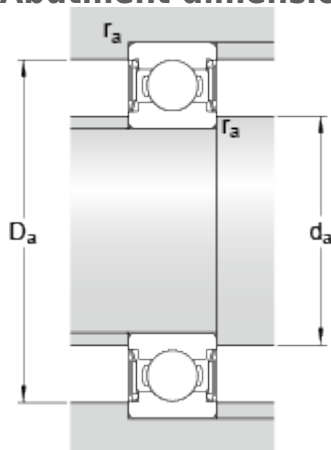
# W 608-2RS1

## Dimensions



d		8	mm
D		22	mm
B		7	mm
d <sub>2</sub>	≈	10.5	mm
D <sub>2</sub>	≈	19.03	mm
r <sub>1,2</sub>	min.	0.3	mm

## Abutment dimensions



d <sub>a</sub>	min.	10	mm
d <sub>a</sub>	max.	10.4	mm
D <sub>a</sub>	max.	20	mm
r <sub>a</sub>	max.	0.3	mm

## Calculation data

Basic dynamic load rating	C	1.99	kN
Basic static load rating	C	0.78	kN
Fatigue load limit	P <sub>u</sub>	0.034	kN
Limiting speed		22000	r/min
Calculation factor	k <sub>r</sub>	0.03	
Calculation factor	f	7.2	

## Mass

Mass bearing		0.012	kg
--------------	--	-------	----