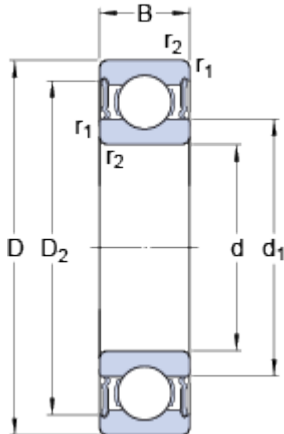


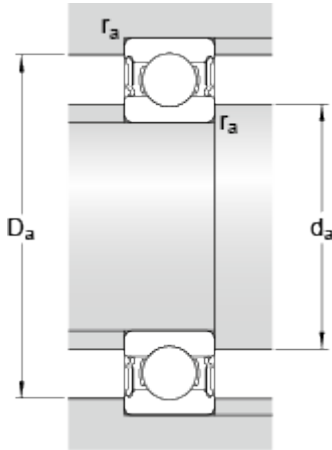
W 6007-2RS1

Dimensions



d		35	mm
D		62	mm
B		14	mm
d ₁	≈	44	mm
D ₂	≈	57.05	mm
r _{1,2}	min.	1	mm

Abutment dimensions



d _a	min.	40	mm
d _a	max.	43.5	mm
D _a	max.	57.5	mm
r _a	max.	1	mm

Calculation data

Basic dynamic load rating	C	13.8	kN
Basic static load rating	C	10.2	kN
Fatigue load limit	P _u	0.44	kN
Limiting speed		6700	r/min
Calculation factor	k _r	0.03	
Calculation factor	f	14.9	

Mass

Mass bearing		0.15	kg
--------------	--	------	----