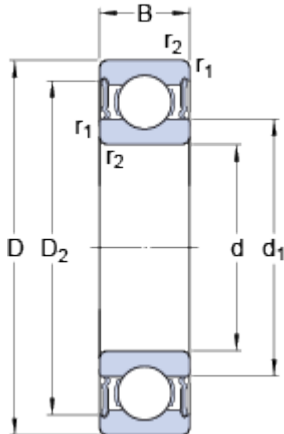


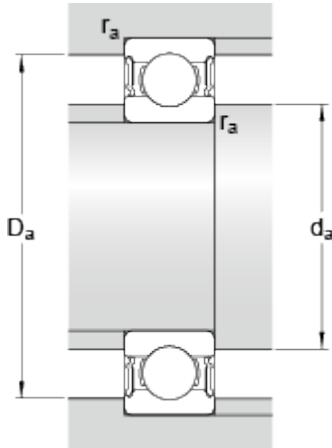
W 6005-2RS1

Dimensions



d		25	mm
D		47	mm
B		12	mm
d ₁	≈	31.7	mm
D ₂	≈	42.73	mm
r _{1,2}	min.	0.6	mm

Abutment dimensions



d _a	min.	29	mm
d _a	max.	31.5	mm
D _a	max.	44.5	mm
r _a	max.	0.6	mm

Calculation data

Basic dynamic load rating	C	8.71	kN
Basic static load rating	C	5.85	kN
Fatigue load limit	P _u	0.25	kN
Limiting speed		9500	r/min
Calculation factor	k _r	0.03	
Calculation factor	f	14.5	

Mass

Mass bearing		0.077	kg
--------------	--	-------	----