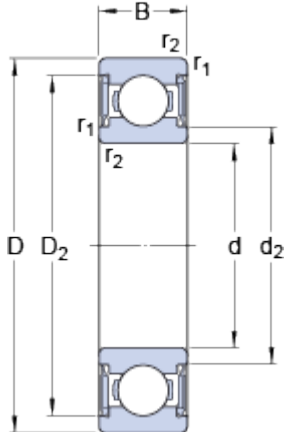


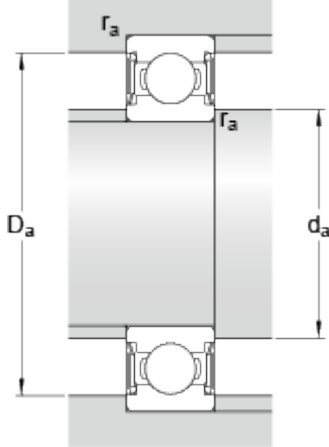
# W 6000-2RS1

## Dimensions



d	10	mm
D	26	mm
B	8	mm
d <sub>2</sub>	≈ 13.9	mm
D <sub>2</sub>	≈ 22.38	mm
r <sub>1,2</sub>	min. 0.3	mm

## Abutment dimensions



d <sub>a</sub>	min.	12	mm
d <sub>a</sub>	max.	13.5	mm
D <sub>a</sub>	max.	24	mm
r <sub>a</sub>	max.	0.3	mm

## Calculation data

Basic dynamic load rating	C	3.97	kN
Basic static load rating	C	1.96	kN
Fatigue load limit	P <sub>u</sub>	0.083	kN
Limiting speed		19000	r/min
Calculation factor	k <sub>r</sub>	0.03	
Calculation factor	f	12.4	

## Mass

Mass bearing		0.018	kg
--------------	--	-------	----