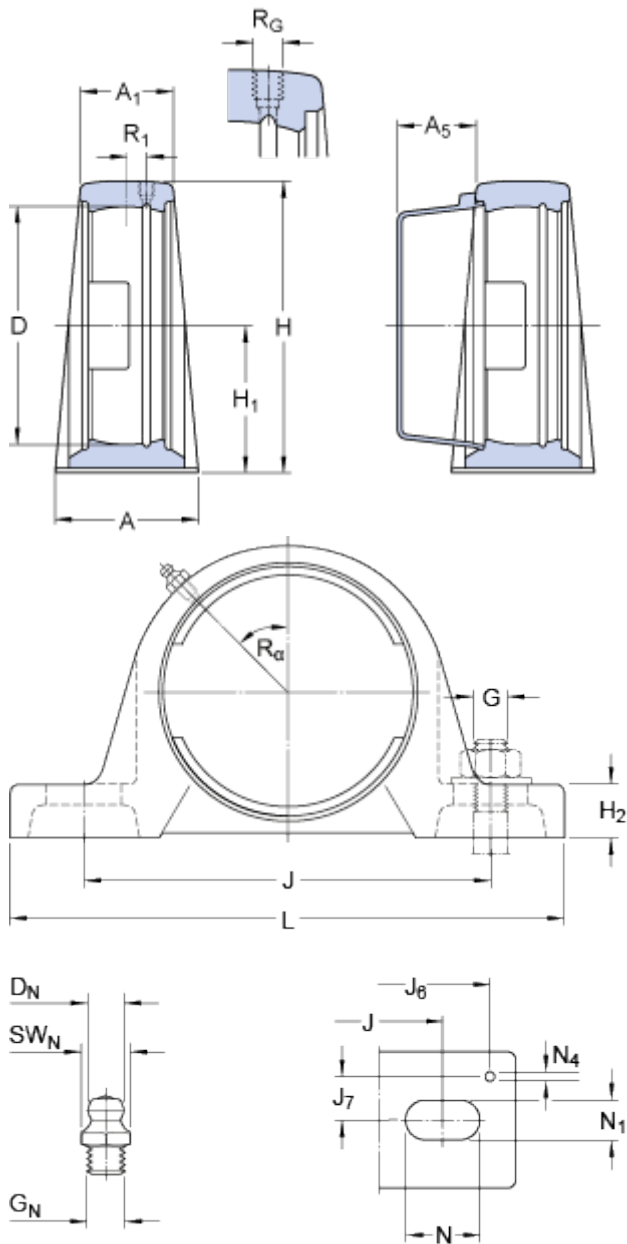


# SY 512 M

Material

Cast iron

## Dimensions



D	110	mm
H <sub>1</sub>	69.9	mm
A	60	mm
A <sub>1</sub>	42	mm
A <sub>5</sub>	35.5	mm
H	137.5	mm
H <sub>2</sub>	26.5	mm
J	190.5	mm
J	max. 202	mm
J	min. 179	mm
L	240	mm
N	29.5	mm
N <sub>1</sub>	18	mm

### Threaded hole

R <sub>G</sub>	1/4-28 UNF
R <sub>1</sub>	5.5 mm
R <sub>α</sub>	45 °

### Grease fitting

D <sub>N</sub>	6.5 mm
SW <sub>N</sub>	7 mm
G <sub>N</sub>	1/4-28 SAE-LT

### Dowel pins

J <sub>6</sub>	222 mm
J <sub>7</sub>	21 mm
N <sub>4</sub>	4 mm

## Mass

Mass housing

3 kg

## Mounting information

Recommended diameter for attachment bolts, mm

G 16 mm

Recommended diameter for attachment bolts, inch

G 0.625 in

## Appropriate products

Appropriate end cover

[ECY 212](#)

