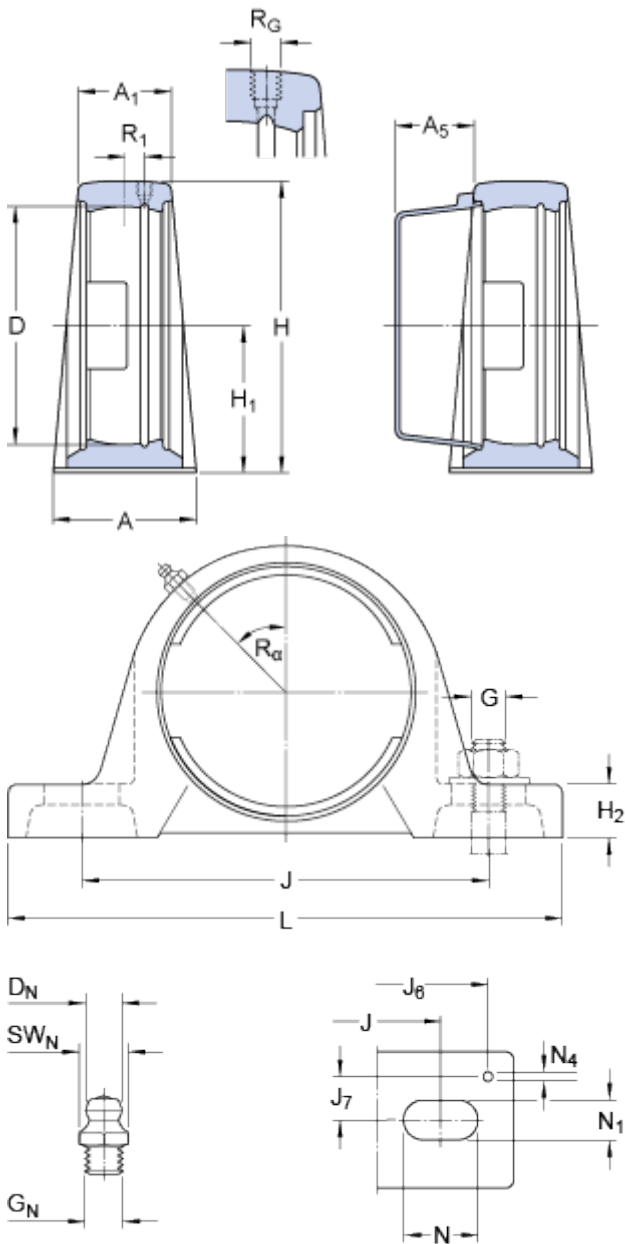


# SY 511 M

Material

Cast iron

## Dimensions



D	100	mm
H <sub>1</sub>	63.5	mm
A	60	mm
A <sub>1</sub>	40	mm
A <sub>5</sub>	34	mm
H	126	mm
H <sub>2</sub>	24	mm
J	171.5	mm
J	max. 181	mm
J	min. 162	mm
L	219	mm
N	27.5	mm
N <sub>1</sub>	18	mm

### Threaded hole

R <sub>G</sub>	1/4-28 UNF
R <sub>1</sub>	4.5 mm
R <sub>α</sub>	45 °

### Grease fitting

D <sub>N</sub>	6.5 mm
SW <sub>N</sub>	7 mm
G <sub>N</sub>	1/4-28 SAE-LT

### Dowel pins

J <sub>6</sub>	201 mm
J <sub>7</sub>	21 mm
N <sub>4</sub>	4 mm

## Mass

Mass housing	2.35	kg
--------------	------	----

## Mounting information

Recommended diameter for attachment bolts, mm	G	16	mm
Recommended diameter for attachment bolts, inch	G	0.625	in

## Appropriate products

Appropriate end cover

[ECY 211](#)

