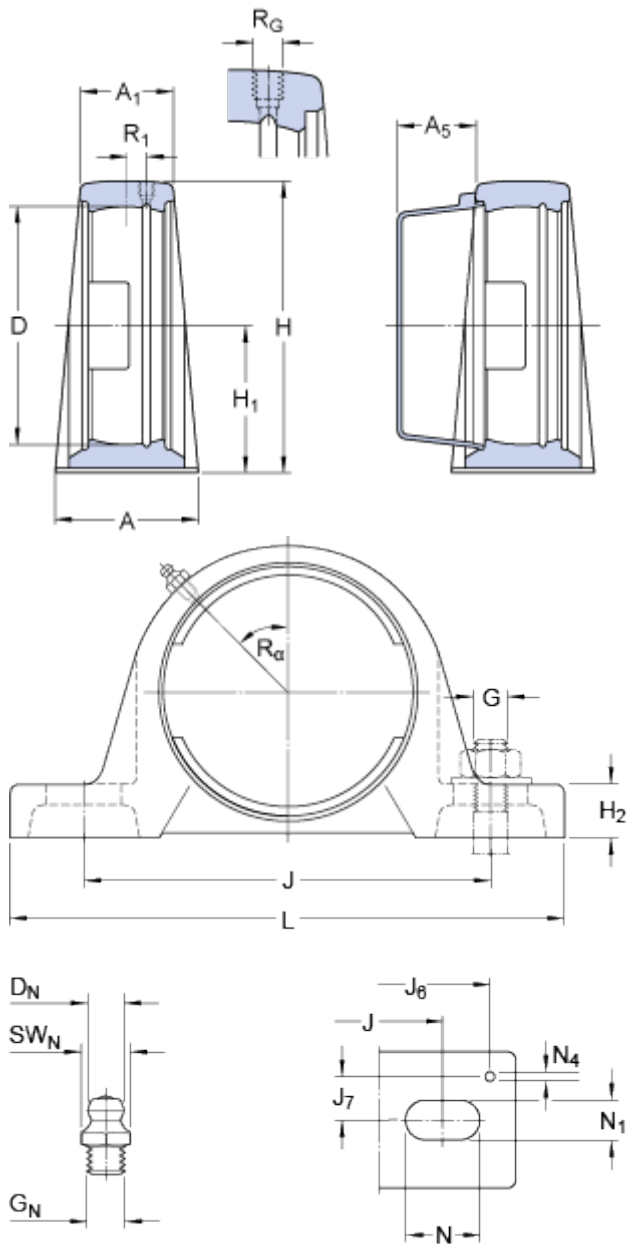


# SY 508 M

Material

Cast iron

## Dimensions



D	80	mm
H <sub>1</sub>	49.2	mm
A	48	mm
A <sub>1</sub>	30	mm
A <sub>5</sub>	23.5	mm
H	99	mm
H <sub>2</sub>	19	mm
J	135.5	mm
J	max. 146	mm
J	min. 125	mm
L	175	mm
N	24.5	mm
N <sub>1</sub>	14	mm

### Threaded hole

R <sub>G</sub>	1/4-28 UNF
R <sub>1</sub>	3.5 mm
R <sub>α</sub>	45 °

### Grease fitting

D <sub>N</sub>	6.5 mm
SW <sub>N</sub>	7 mm
G <sub>N</sub>	1/4-28 SAE-LT

### Dowel pins

J <sub>6</sub>	161 mm
J <sub>7</sub>	17 mm
N <sub>4</sub>	4 mm

## Mass

Mass housing

1.2

kg

## Mounting information

Recommended diameter for attachment bolts, mm

G 12 mm

Recommended diameter for attachment bolts, inch

G 0.5 in

## Appropriate products

Appropriate end cover

[ECY 208](#)

