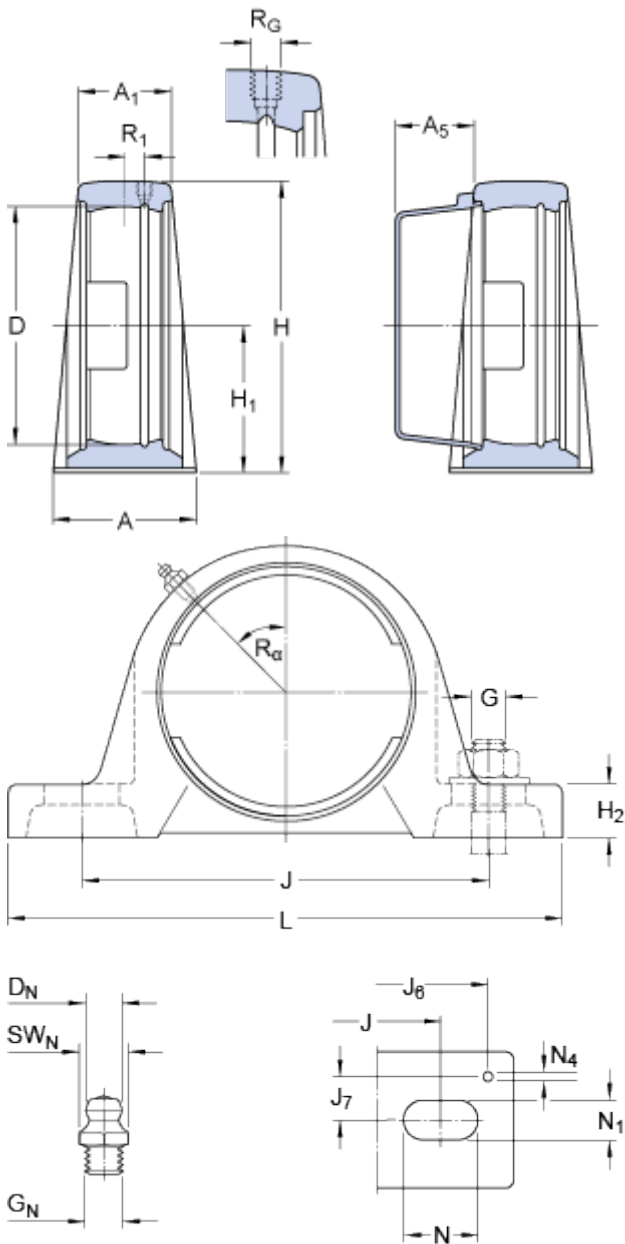


# SY 507 M

Material

Cast iron

## Dimensions



D	72	mm
H <sub>1</sub>	47.6	mm
A	45	mm
A <sub>1</sub>	27	mm
A <sub>5</sub>	22	mm
H	93	mm
H <sub>2</sub>	19	mm
J	126	mm
J	max. 133	mm
J	min. 119	mm
L	160	mm
N	21	mm
N <sub>1</sub>	14	mm

### Threaded hole

R <sub>G</sub>	1/4-28 UNF
R <sub>1</sub>	3 mm
R <sub>α</sub>	45 °

### Grease fitting

D <sub>N</sub>	6.5	mm
SW <sub>N</sub>	7	mm
G <sub>N</sub>	1/4-28 SAE-LT	

### Dowel pins

J <sub>6</sub>	146	mm
J <sub>7</sub>	15.5	mm
N <sub>4</sub>	4	mm

## Mass

Mass housing

1.05

kg

## Mounting information

Recommended diameter for attachment bolts, mm

G 12 mm

Recommended diameter for attachment bolts, inch

G 0.5 in

## Appropriate products

Appropriate end cover

[ECY 207](#)

