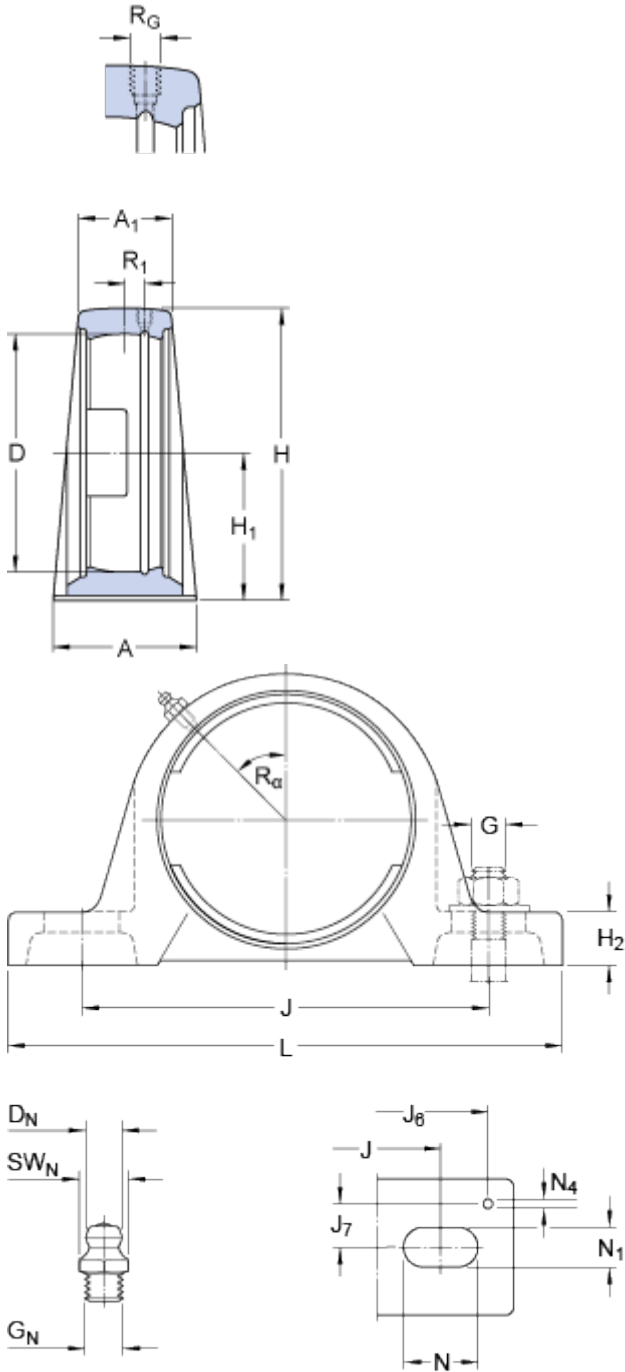


SY 503 M

Dimensions



D	40	mm
H ₁	30.2	mm
A	32	mm
A ₁	18	mm
H	57	mm
H ₂	14	mm
J	97	mm
J	max.	106 mm
J	min.	88 mm
L	127	mm
N	20.5	mm
N ₁	11.5	mm

Threaded hole

R _G	1/4-28 UNF	
R ₁	1	mm
R _α	45	°

Grease fitting

D _N	6.5	mm
SW _N	7	mm
G _N	1/4-28 SAE-LT	

Dowel pins

J ₆	118	mm
J ₇	11.5	mm
N ₄	2	mm

Mass

Mass housing	0.37	kg
--------------	------	----

Mounting information

Recommended diameter for attachment bolts, mm	G	10	mm
Recommended diameter for attachment bolts, inch	G	0.375	in

