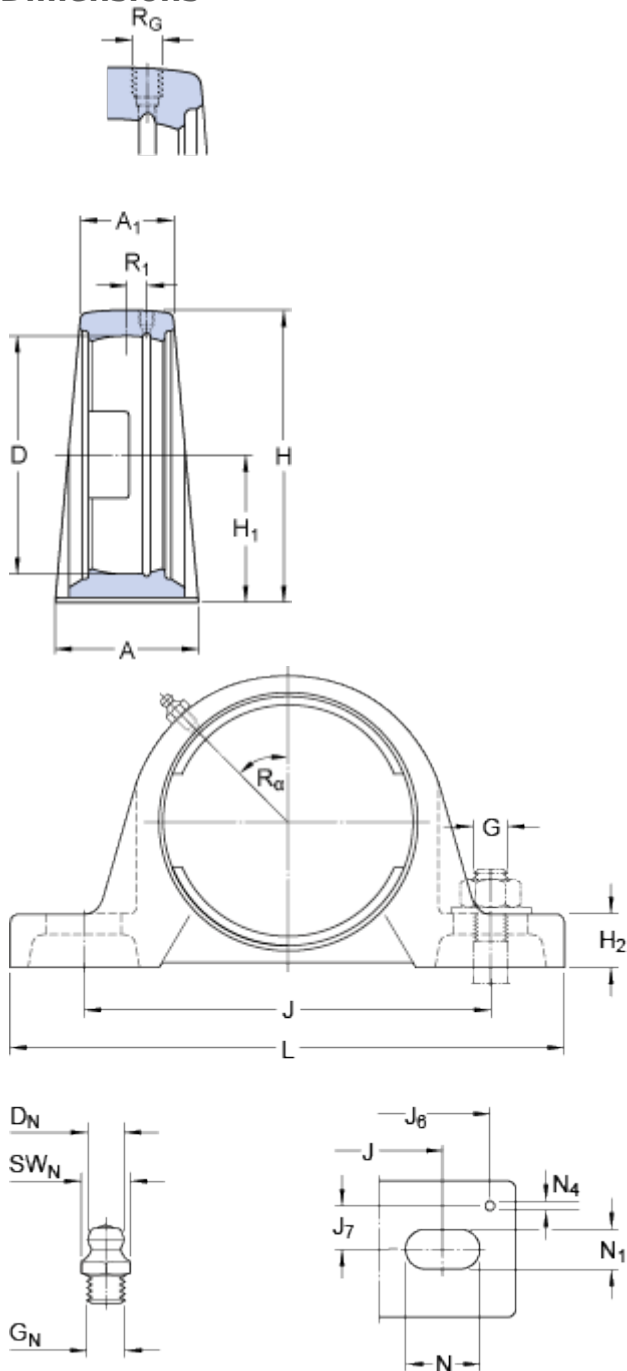


# SYJ 515

## Dimensions



D	130	mm
H <sub>1</sub>	82.5	mm
A	74	mm
A <sub>1</sub>	54	mm
H	165.5	mm
H <sub>2</sub>	28	mm
J	217	mm
J	max.	222 mm
J	min.	212 mm
L	275	mm
N	30	mm
N <sub>1</sub>	25	mm

### Threaded hole

R <sub>G</sub>	1/4-28 UNF
R <sub>1</sub>	6.5 mm
R <sub>α</sub>	45 °

### Grease fitting

D <sub>N</sub>	6.5 mm
SW <sub>N</sub>	7 mm
G <sub>N</sub>	1/4-28 SAE-LT

### Dowel pins

J <sub>6</sub>	255	mm
J <sub>7</sub>	27	mm
N <sub>4</sub>	4	mm

## Mass

Mass housing	5.3	kg
--------------	-----	----

## Mounting information

Recommended diameter for attachment bolts, mm	G	20	mm
Recommended diameter for attachment bolts, inch	G	0.75	in

