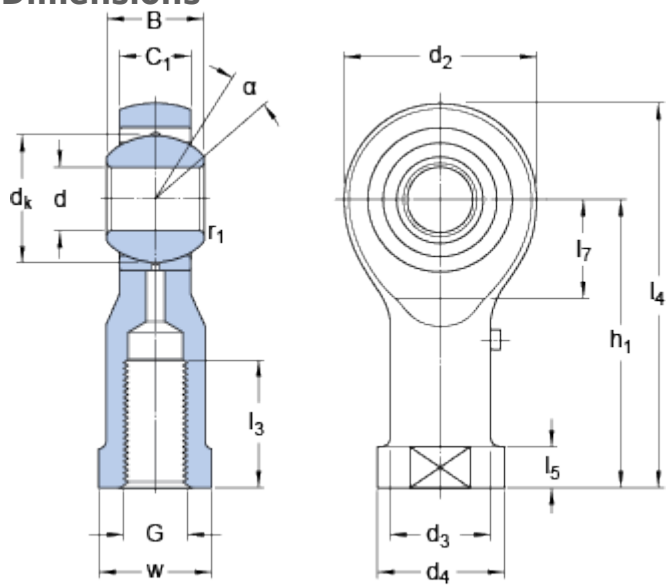


# SIKAC 30 M

## Dimensions



d		30	mm
d <sub>2</sub>	max.	71	mm
B		37	mm
G	6H	M 30x2	
C <sub>1</sub>	max.	27	mm
h <sub>1</sub>		110	mm
α		17	°
d <sub>k</sub>		50.8	mm
d <sub>3</sub>	≈	40	mm
d <sub>4</sub>	max.	52	mm
l <sub>3</sub>	min.	45	mm
l <sub>4</sub>	max.	146	mm
l <sub>5</sub>	≈	15	mm
l <sub>7</sub>	min.	35	mm
w	h14	41	mm
r <sub>1</sub>	min.	0.3	mm

## Calculation data

Basic dynamic load rating	C	64	kN
Basic static load rating	C	69.5	kN
Specific dynamic load factor	K	50	N/mm <sup>2</sup>
Material constant	K <sub>M</sub>	330	

## Mass

Mass rod end	1.15	kg
--------------	------	----