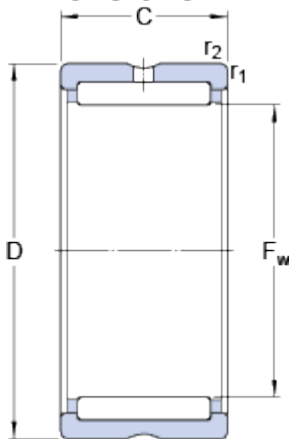


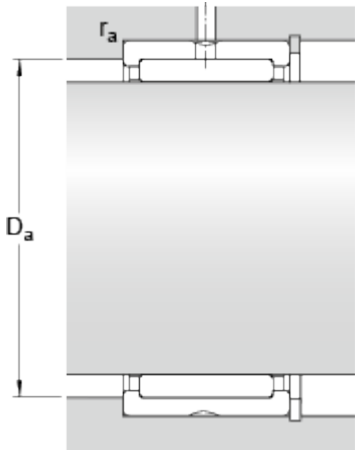
RNA 6903

Dimensions



F_w	22	mm
D	30	mm
C	23	mm
$r_{1,2}$	min. 0.3	mm

Abutment dimensions



D_a	max. 28	mm
r_a	max. 0.3	mm

Calculation data

Basic dynamic load rating	C	18.7	kN
Basic static load rating	C	30.5	kN
Fatigue load limit	P_u	3.75	kN
Reference speed		18000	r/min
Limiting speed		20000	r/min

Mass

Mass bearing	0.042	kg
--------------	-------	----

Associated products

Radial shaft seal with a low cross-sectional height, single lip	G 22x30x4
Radial shaft seal with a low cross-sectional height, double lip	SD 22x30x4