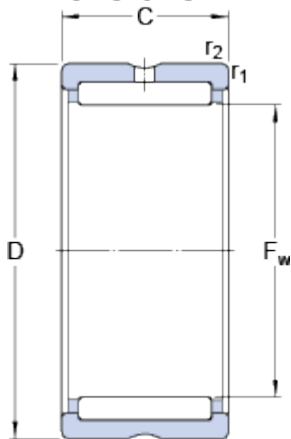


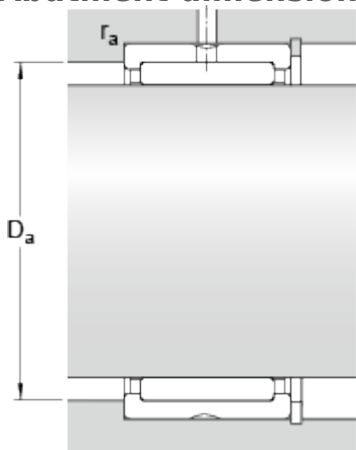
RNA 6902

Dimensions



F_w	20	mm
D	28	mm
C	23	mm
$r_{1,2}$	min. 0.3	mm

Abutment dimensions



D_a	max. 26	mm
r_a	max. 0.3	mm

Calculation data

Basic dynamic load rating	C	17.2	kN
Basic static load rating	C	27	kN
Fatigue load limit	P_u	3.35	kN
Reference speed		19000	r/min
Limiting speed		22000	r/min

Mass

Mass bearing	0.04	kg
--------------	------	----

Associated products

Radial shaft seal with a low cross-sectional height, single lip	G 20x28x4
Radial shaft seal with a low cross-sectional height, double lip	SD 20x28x4