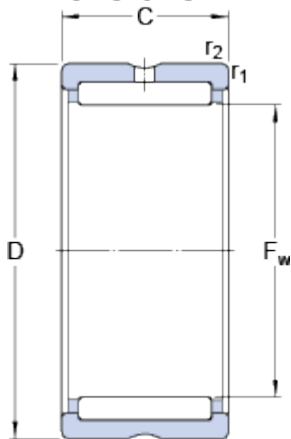


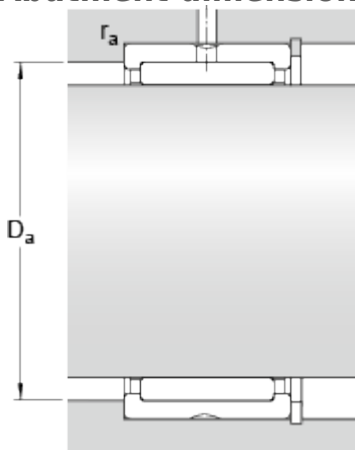
# RNA 4903

## Dimensions



$F_w$	22	mm
D	30	mm
C	13	mm
$r_{1,2}$	min. 0.3	mm

## Abutment dimensions



$D_a$	max. 28	mm
$r_a$	max. 0.3	mm

## Calculation data

Basic dynamic load rating	C	11.4	kN
Basic static load rating	C	16.3	kN
Fatigue load limit	$P_u$	1.96	kN
Reference speed		18000	r/min
Limiting speed		20000	r/min

## Mass

Mass bearing	0.022	kg
--------------	-------	----

## Associated products

Radial shaft seal with a low cross-sectional height, single lip	<a href="#">G 22x30x4</a>
Radial shaft seal with a low cross-sectional height, double lip	<a href="#">SD 22x30x4</a>