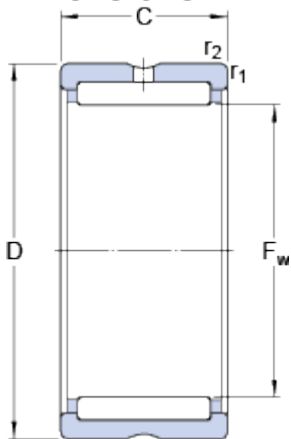


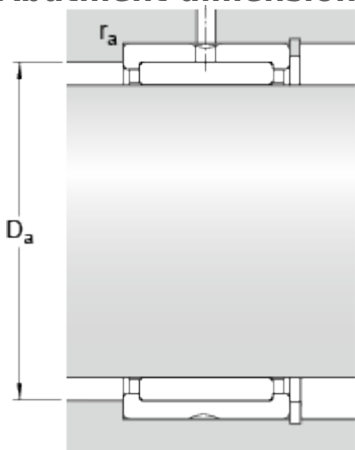
# RNA 4900

## Dimensions



$F_w$	14	mm
D	22	mm
C	13	mm
$r_{1,2}$	min. 0.3	mm

## Abutment dimensions



$D_a$	max. 20	mm
$r_a$	max. 0.3	mm

## Calculation data

Basic dynamic load rating	C	8.8	kN
Basic static load rating	C	10.4	kN
Fatigue load limit	$P_u$	1.22	kN
Reference speed		24000	r/min
Limiting speed		28000	r/min

## Mass

Mass bearing	0.017	kg
--------------	-------	----

## Associated products

Radial shaft seal with a low cross-sectional height, single lip	<a href="#">G 14x22x3</a>
Radial shaft seal with a low cross-sectional height, double lip	<a href="#">SD 14x22x3</a>