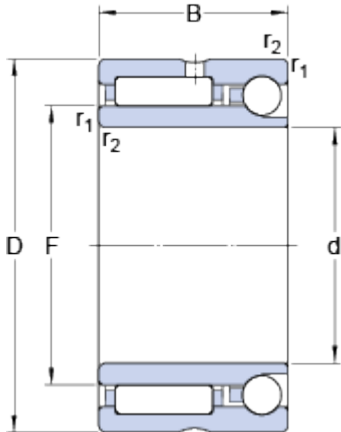


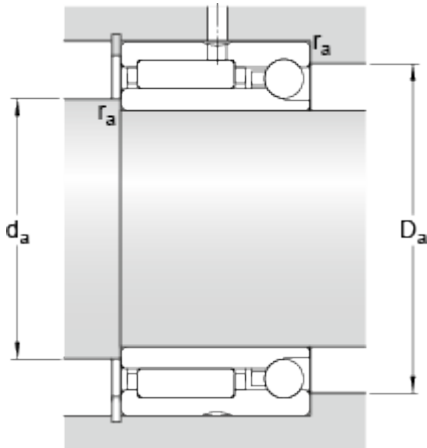
# NKIA 5902

## Dimensions



d	15	mm
D	28	mm
B	18	mm
F	20	mm
r <sub>1,2</sub>	min. 0.3	mm

## Abutment dimensions



d <sub>a</sub>	min. 17	mm
D <sub>a</sub>	max. 26	mm
r <sub>a</sub>	max. 0.3	mm

## Calculation data

Basic dynamic load rating, radial direction	C	11.2	kN
Basic static load rating, radial direction	C	15.3	kN
Basic dynamic load rating, axial direction	C	2.27	kN
Basic static load rating, axial direction	C	2.37	kN
Fatigue load limit, radial direction	P <sub>u</sub>	1.83	kN
Fatigue load limit, axial direction	P <sub>u</sub>	0.099	kN
Reference speed		19000	r/min
Limiting speed		22000	r/min

## Mass

Mass bearing	0.05	kg
--------------	------	----