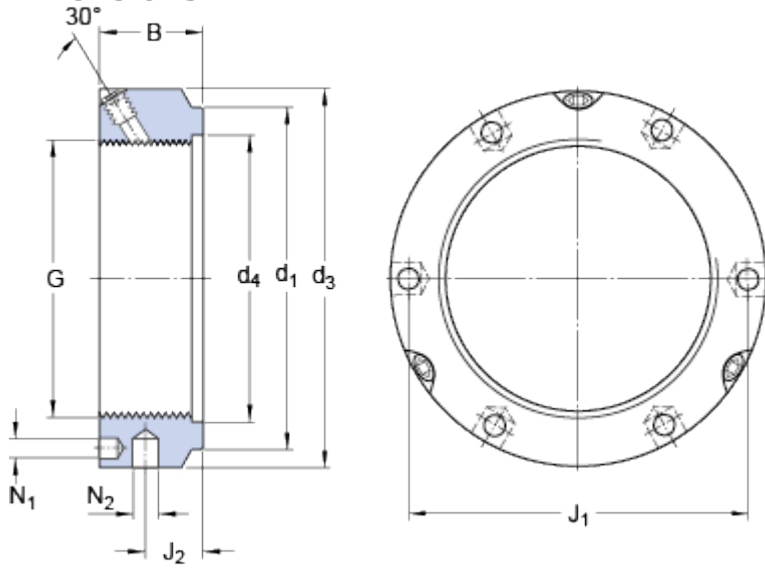


KMTA 11

Dimensions



G	M 55x1.5	
d ₁	70	mm
B	24	mm
d ₃	75	mm
d ₄	58	mm
J ₁	66.5	mm
J ₂	13	mm
N ₁	4.3	mm
N ₂	6	mm

Calculation data

Axial static load carrying capacity	340	kN
-------------------------------------	-----	----

Mass

Mass	0.37	kg
------	------	----

Mounting information

Associated spanner (Hook spanner in accordance with DIN 1810)	B 68-75
Grub (set) / Locking screw size	M 6
Recommended tightening torque	8 N·m