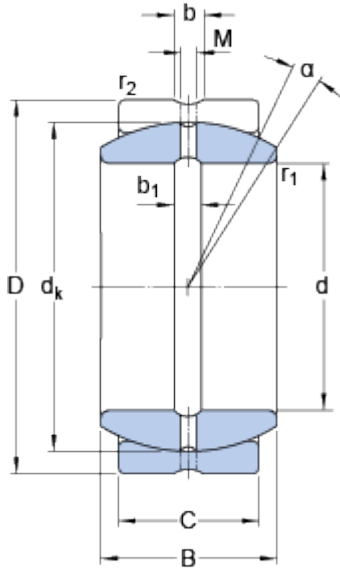


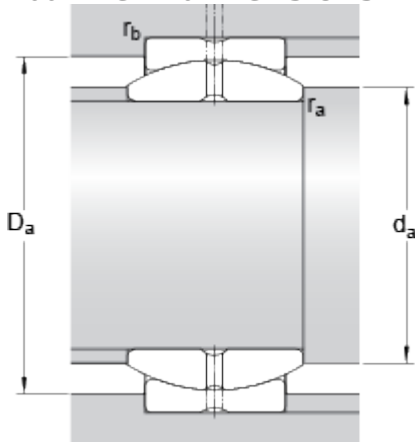
# GE 80 ES

## Dimensions



d	80	mm
D	120	mm
B	55	mm
C	45	mm
$\alpha$	6	°
$d_k$	105	mm
b	7.7	mm
$b_1$	7.7	mm
M	4	mm
$r_1$	min. 1	mm
$r_2$	min. 1	mm

## Abutment dimensions



$d_a$	min.	87.1	mm
$d_a$	max.	89.4	mm
$D_a$	min.	99.7	mm
$D_a$	max.	113.8	mm
$r_a$	max.	1	mm
$r_b$	max.	1	mm

## Calculation data

Basic dynamic load rating	C	400	kN
Basic static load rating	C	2000	kN
Specific dynamic load factor	K	100	N/mm <sup>2</sup>
Specific static load factor	K	500	N/mm <sup>2</sup>
Material constant	$K_M$	330	

## Mass

Mass plain bearing		2.3	kg
--------------------	--	-----	----

