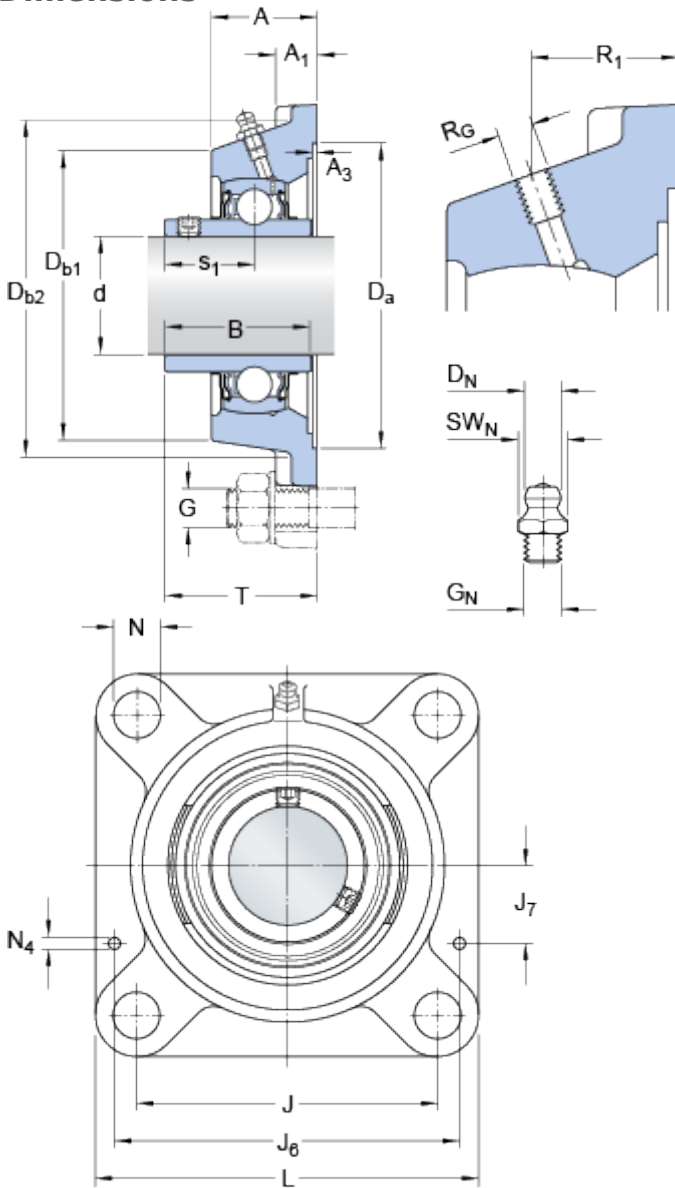


FYJ 35 TF

Housing material

Cast iron

Dimensions



d		35	mm
D _a	H11	106.4	mm
D _{b1}		87	mm
D _{b2}		96	mm
A		34	mm
A ₁		13	mm
A ₃	H14	3.2	mm
B		42.9	mm
J		92	mm
L		118	mm
N		14	mm
s ₁		25.4	mm
T		44.4	mm

Threaded hole

R _G		1/4-28 UNF	
R ₁		20.5	mm

Grease fitting

D _N		6.5	mm
SW _N		7	mm
G _N		1/4-28 SAE-LT	

Dowel pins

J ₆		106	mm
J ₇		29	mm
N ₄		4	mm

Calculation data

Basic dynamic load rating	C	25.5	kN
Basic static load rating	C	15.3	kN
Fatigue load limit	P _u	0.655	kN
Limiting speed (with shaft tolerance h6)		5300	r/min

Mass

Mass bearing unit		1.3	kg
-------------------	--	-----	----

Mounting information

Thread grub screw	G ₂	M6x0.75	
Hexagonal key size for grub screw	N	3	mm
Recommended tightening torque for grub screw		4	N·m
Recommended diameter for attachment bolts, mm	G	12	mm
Recommended diameter for attachment bolts, inch	G	0.5	in

Included products

Housing	FYJ 507
Bearing	YAR 207-2F