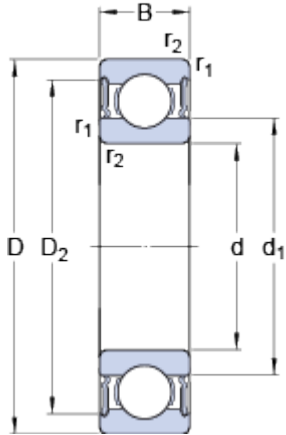


6315-2RS1

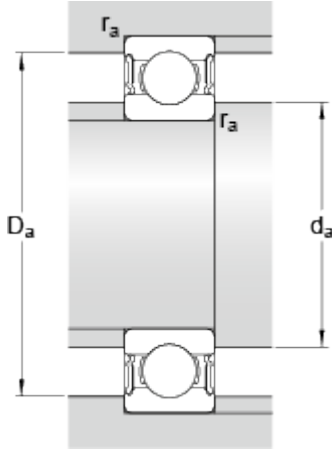
SKF Explorer

Dimensions



d		75	mm
D		160	mm
B		37	mm
d ₁	≈	101.4	mm
D ₂	≈	138.4	mm
r _{1,2}	min.	2.1	mm

Abutment dimensions



d _a	min.	87	mm
d _a	max.	100.9	mm
D _a	max.	148	mm
r _a	max.	2	mm

Calculation data

Basic dynamic load rating	C	119	kN
Basic static load rating	C	76.5	kN
Fatigue load limit	P _u	3	kN
Limiting speed		2800	r/min
Calculation factor	k _r	0.03	
Calculation factor	f	13.2	

Mass

Mass bearing		3.13	kg
--------------	--	------	----