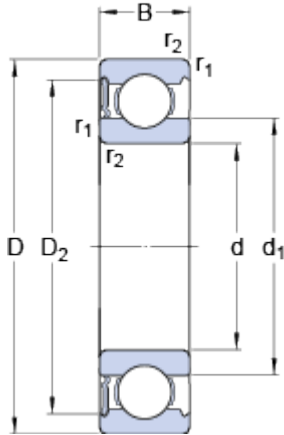


6308-RS1

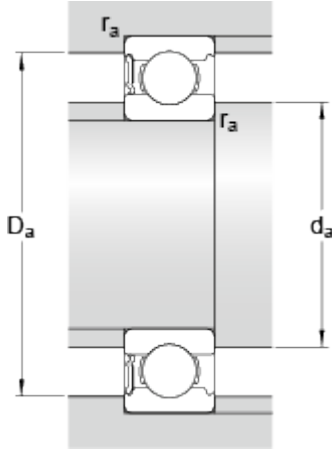
SKF Explorer

Dimensions



d		40	mm
D		90	mm
B		23	mm
d ₁	≈	56.11	mm
D ₂	≈	77.7	mm
r _{1,2}	min.	1.5	mm

Abutment dimensions



d _a	min.	49	mm
d _a	max.	56	mm
D _a	max.	81	mm
r _a	max.	1.5	mm

Calculation data

Basic dynamic load rating	C	42.3	kN
Basic static load rating	C	24	kN
Fatigue load limit	P _u	1.02	kN
Limiting speed		5000	r/min
Calculation factor	k _r	0.03	
Calculation factor	f	13.2	

Mass

Mass bearing		0.64	kg
--------------	--	------	----