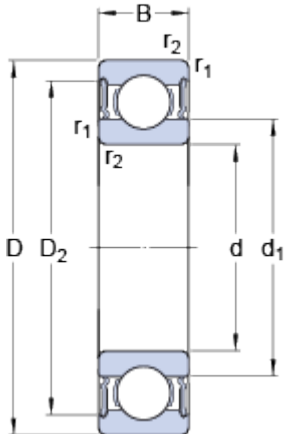


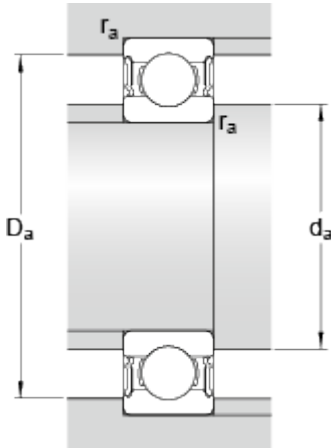
63007-2RS1

Dimensions



d		35	mm
D		62	mm
B		20	mm
d ₁	≈	43.75	mm
D ₂	≈	55.61	mm
r _{1,2}	min.	1	mm

Abutment dimensions



d _a	min.	39.6	mm
d _a	max.	43.7	mm
D _a	max.	57.4	mm
r _a	max.	1	mm

Calculation data

Basic dynamic load rating	C	15.9	kN
Basic static load rating	C	10.2	kN
Fatigue load limit	P _u	0.44	kN
Limiting speed		7000	r/min
Calculation factor	k _r	0.025	
Calculation factor	f	15	

Mass

Mass bearing		0.22	kg
--------------	--	------	----