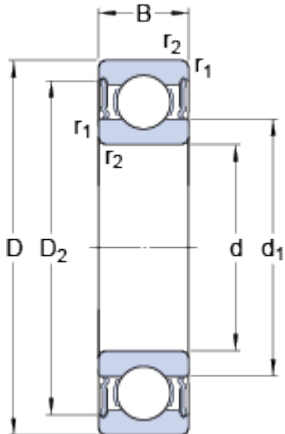


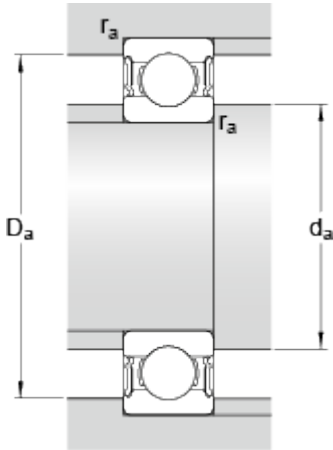
63005-2RS1

Dimensions



d		25	mm
D		47	mm
B		16	mm
d ₁	≈	32	mm
D ₂	≈	42.2	mm
r _{1,2}	min.	0.6	mm

Abutment dimensions



d _a	min.	29.2	mm
d _a	max.	31.9	mm
D _a	max.	43.8	mm
r _a	max.	0.6	mm

Calculation data

Basic dynamic load rating	C	11.2	kN
Basic static load rating	C	6.55	kN
Fatigue load limit	P _u	0.275	kN
Limiting speed		9500	r/min
Calculation factor	k _r	0.025	
Calculation factor	f	14	

Mass

Mass bearing		0.11	kg
--------------	--	------	----