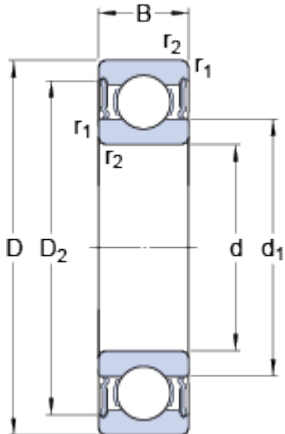


63004-2RS1

Dimensions



d		20	mm
D		42	mm
B		16	mm
d ₁	≈	27.2	mm
D ₂	≈	37.19	mm
r _{1,2}	min.	0.6	mm

Abutment dimensions



d _a	min.	23.2	mm
d _a	max.	27.1	mm
D _a	max.	38.8	mm
r _a	max.	0.6	mm

Calculation data

Basic dynamic load rating	C	9.36	kN
Basic static load rating	C	5	kN
Fatigue load limit	P _u	0.212	kN
Limiting speed		11000	r/min
Calculation factor	k _r	0.025	
Calculation factor	f	14	

Mass

Mass bearing		0.086	kg
--------------	--	-------	----