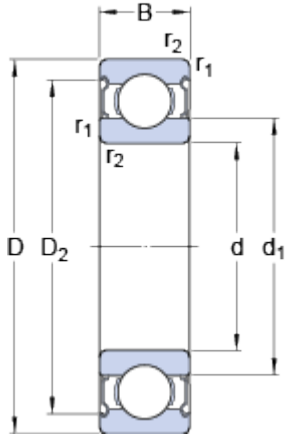


# 628-2Z

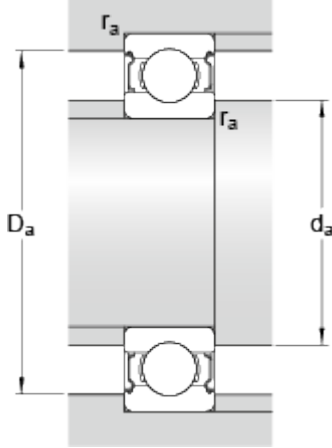
SKF Explorer

## Dimensions



d		8	mm
D		24	mm
B		8	mm
d <sub>1</sub>	≈	14.45	mm
D <sub>2</sub>	≈	21.2	mm
r <sub>1,2</sub>	min.	0.3	mm

## Abutment dimensions



d <sub>a</sub>	min.	10.4	mm
d <sub>a</sub>	max.	14.4	mm
D <sub>a</sub>	max.	21.6	mm
r <sub>a</sub>	max.	0.3	mm

## Calculation data

Basic dynamic load rating	C	3.9	kN
Basic static load rating	C	1.66	kN
Fatigue load limit	P <sub>u</sub>	0.071	kN
Reference speed		63000	r/min
Limiting speed		32000	r/min
Calculation factor	k <sub>r</sub>	0.025	
Calculation factor	f	13	

## Mass

Mass bearing		0.018	kg
--------------	--	-------	----