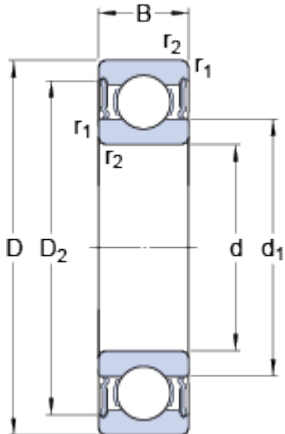


# 62307-2RS1

## Dimensions



d		35	mm
D		80	mm
B		31	mm
d <sub>1</sub>	≈	49.56	mm
D <sub>2</sub>	≈	69.2	mm
r <sub>1,2</sub>	min.	1.5	mm

## Abutment dimensions



d <sub>a</sub>	min.	44	mm
d <sub>a</sub>	max.	49.5	mm
D <sub>a</sub>	max.	71	mm
r <sub>a</sub>	max.	1.5	mm

## Calculation data

Basic dynamic load rating	C	33.2	kN
Basic static load rating	C	19	kN
Fatigue load limit	P <sub>u</sub>	0.815	kN
Limiting speed		6000	r/min
Calculation factor	k <sub>r</sub>	0.03	
Calculation factor	f	13.1	

## Mass

Mass bearing		0.68	kg
--------------	--	------	----