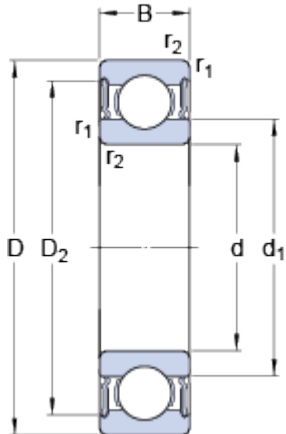


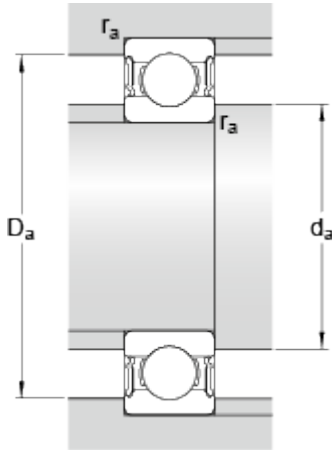
# 62302-2RS1

## Dimensions



d		15	mm
D		42	mm
B		17	mm
d <sub>1</sub>	≈	23.7	mm
D <sub>2</sub>	≈	36.23	mm
r <sub>1,2</sub>	min.	1	mm

## Abutment dimensions



d <sub>a</sub>	min.	20.6	mm
d <sub>a</sub>	max.	23.6	mm
D <sub>a</sub>	max.	36.4	mm
r <sub>a</sub>	max.	1	mm

## Calculation data

Basic dynamic load rating	C	11.4	kN
Basic static load rating	C	5.4	kN
Fatigue load limit	P <sub>u</sub>	0.228	kN
Limiting speed		12000	r/min
Calculation factor	k <sub>r</sub>	0.03	
Calculation factor	f	12	

## Mass

Mass bearing		0.11	kg
--------------	--	------	----