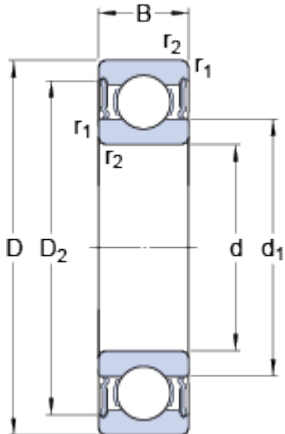


# 62212-2RS1

## Dimensions



d		60	mm
D		110	mm
B		28	mm
d <sub>1</sub>	≈	75.5	mm
D <sub>2</sub>	≈	98	mm
r <sub>1,2</sub>	min.	1.5	mm

## Abutment dimensions



d <sub>a</sub>	min.	69	mm
d <sub>a</sub>	max.	75.4	mm
D <sub>a</sub>	max.	101	mm
r <sub>a</sub>	max.	1.5	mm

## Calculation data

Basic dynamic load rating	C	52.7	kN
Basic static load rating	C	36	kN
Fatigue load limit	P <sub>u</sub>	1.53	kN
Limiting speed		4000	r/min
Calculation factor	k <sub>r</sub>	0.025	
Calculation factor	f	14.3	

## Mass

Mass bearing		1.01	kg
--------------	--	------	----