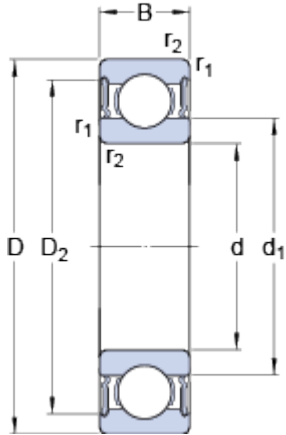


# 6220-2RS1

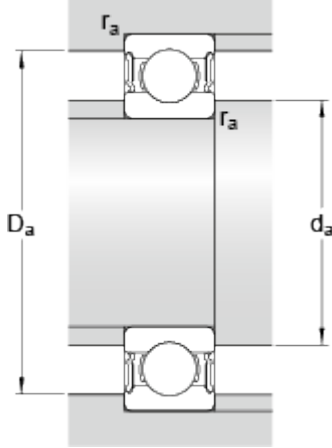
SKF Explorer

## Dimensions



d		100	mm
D		180	mm
B		34	mm
d <sub>1</sub>	≈	124.8	mm
D <sub>2</sub>	≈	159.9	mm
r <sub>1,2</sub>	min.	2.1	mm

## Abutment dimensions



d <sub>a</sub>	min.	112	mm
d <sub>a</sub>	max.	124	mm
D <sub>a</sub>	max.	168	mm
r <sub>a</sub>	max.	2	mm

## Calculation data

Basic dynamic load rating	C	127	kN
Basic static load rating	C	93	kN
Fatigue load limit	P <sub>u</sub>	3.35	kN
Limiting speed		2400	r/min
Calculation factor	k <sub>r</sub>	0.025	
Calculation factor	f	14.4	

## Mass

Mass bearing		3.3	kg
--------------	--	-----	----