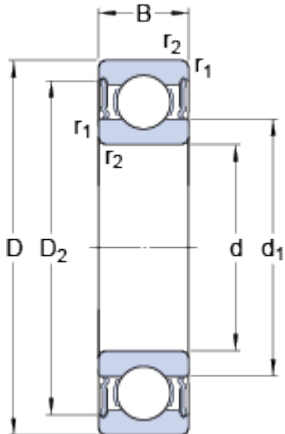


62207-2RS1

Dimensions



B	23	mm
---	----	----

Abutment dimensions



d _a	min.	42	mm
d _a	max.	46.8	mm
D _a	max.	65	mm
r _a	max.	1	mm

Calculation data

Basic dynamic load rating	C	25.5	kN
Basic static load rating	C	15.3	kN
Fatigue load limit	P _u	0.655	kN
Limiting speed		6300	r/min
Calculation factor	k _r	0.025	
Calculation factor	f	13.8	

Mass

Mass bearing		0.4	kg
--------------	--	-----	----