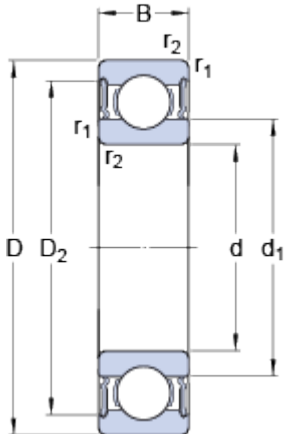


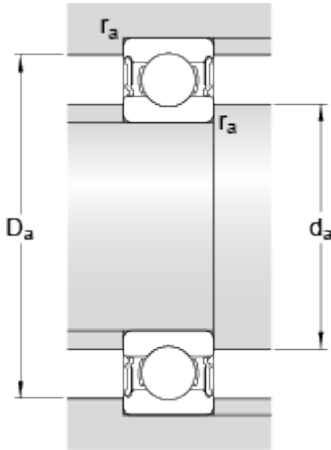
# 62204-2RS1

## Dimensions



d		20	mm
D		47	mm
B		18	mm
d <sub>1</sub>	≈	28.8	mm
D <sub>2</sub>	≈	40.59	mm
r <sub>1,2</sub>	min.	1	mm

## Abutment dimensions



d <sub>a</sub>	min.	25.6	mm
d <sub>a</sub>	max.	28.7	mm
D <sub>a</sub>	max.	41.4	mm
r <sub>a</sub>	max.	1	mm

## Calculation data

Basic dynamic load rating	C	12.7	kN
Basic static load rating	C	6.55	kN
Fatigue load limit	P <sub>u</sub>	0.28	kN
Limiting speed		10000	r/min
Calculation factor	k <sub>r</sub>	0.025	
Calculation factor	f	13	

## Mass

Mass bearing		0.13	kg
--------------	--	------	----