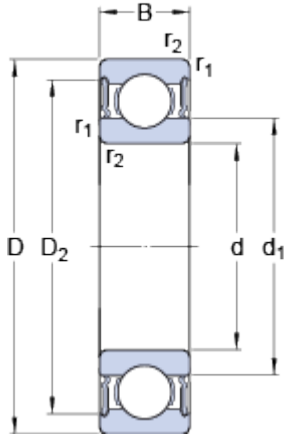


6217-2RS1

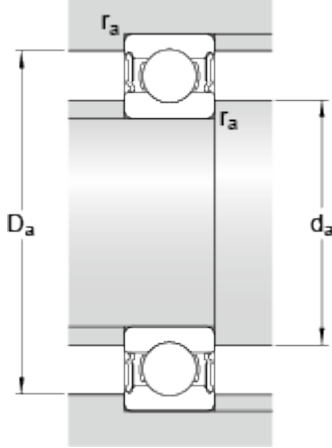
SKF Explorer

Dimensions



d		85	mm
D		150	mm
B		28	mm
d ₁	≈	106.05	mm
D ₂	≈	134.3	mm
r _{1,2}	min.	2	mm

Abutment dimensions



d _a	min.	96	mm
d _a	max.	105.9	mm
D _a	max.	139	mm
r _a	max.	2	mm

Calculation data

Basic dynamic load rating	C	87.1	kN
Basic static load rating	C	64	kN
Fatigue load limit	P _u	2.5	kN
Limiting speed		2800	r/min
Calculation factor	k _r	0.025	
Calculation factor	f	14.7	

Mass

Mass bearing		1.89	kg
--------------	--	------	----