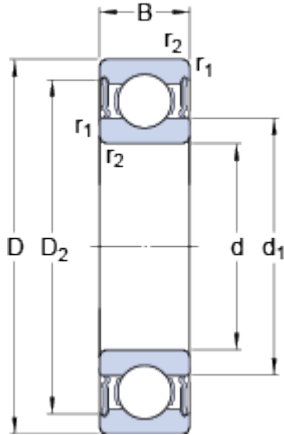


6216-2RS1

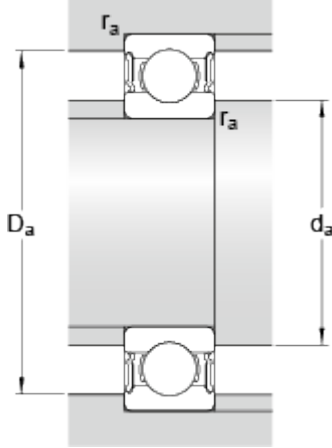
SKF Explorer

Dimensions



d		80	mm
D		140	mm
B		26	mm
d ₁	≈	101.4	mm
D ₂	≈	126.5	mm
r _{1,2}	min.	2	mm

Abutment dimensions



d _a	min.	91	mm
d _a	max.	100.9	mm
D _a	max.	129	mm
r _a	max.	2	mm

Calculation data

Basic dynamic load rating	C	72.8	kN
Basic static load rating	C	55	kN
Fatigue load limit	P _u	2.2	kN
Limiting speed		3000	r/min
Calculation factor	k _r	0.025	
Calculation factor	f	15	

Mass

Mass bearing		1.51	kg
--------------	--	------	----