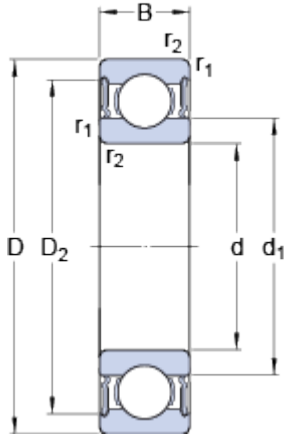


6214-2RS1

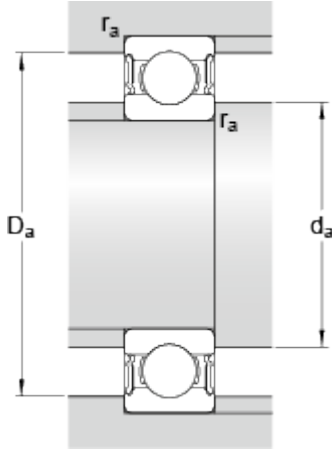
SKF Explorer

Dimensions



d		70	mm
D		125	mm
B		24	mm
d ₁	≈	87.05	mm
D ₂	≈	111	mm
r _{1,2}	min.	1.5	mm

Abutment dimensions



d _a	min.	79	mm
d _a	max.	87	mm
D _a	max.	116	mm
r _a	max.	1.5	mm

Calculation data

Basic dynamic load rating	C	63.7	kN
Basic static load rating	C	45	kN
Fatigue load limit	P _u	1.9	kN
Limiting speed		3400	r/min
Calculation factor	k _r	0.025	
Calculation factor	f	14.7	

Mass

Mass bearing		1.12	kg
--------------	--	------	----