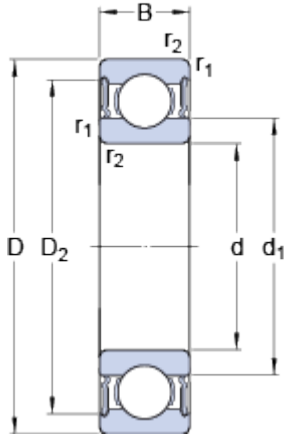


6212-2RS1

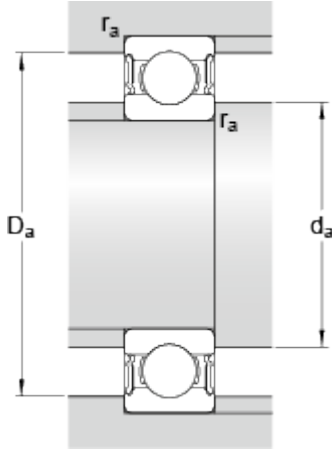
SKF Explorer

Dimensions



d		60	mm
D		110	mm
B		22	mm
d ₁	≈	75.5	mm
D ₂	≈	98	mm
r _{1,2}	min.	1.5	mm

Abutment dimensions



d _a	min.	69	mm
d _a	max.	75.4	mm
D _a	max.	101	mm
r _a	max.	1.5	mm

Calculation data

Basic dynamic load rating	C	55.3	kN
Basic static load rating	C	36	kN
Fatigue load limit	P _u	1.53	kN
Limiting speed		4000	r/min
Calculation factor	k _r	0.025	
Calculation factor	f	14.3	

Mass

Mass bearing		0.82	kg
--------------	--	------	----