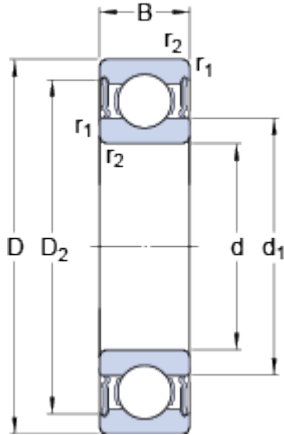


6208-2RS1

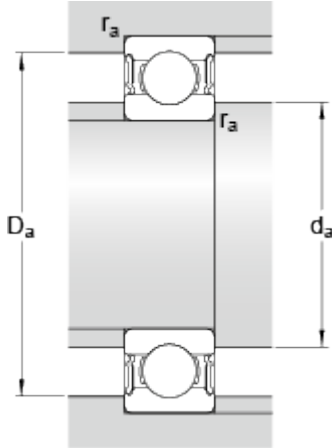
SKF Explorer

Dimensions



d		40	mm
D		80	mm
B		18	mm
d ₁	≈	52.6	mm
D ₂	≈	69.8	mm
r _{1,2}	min.	1.1	mm

Abutment dimensions



d _a	min.	47	mm
d _a	max.	52.5	mm
D _a	max.	73	mm
r _a	max.	1	mm

Calculation data

Basic dynamic load rating	C	32.5	kN
Basic static load rating	C	19	kN
Fatigue load limit	P _u	0.8	kN
Limiting speed		5600	r/min
Calculation factor	k _r	0.025	
Calculation factor	f	13.8	

Mass

Mass bearing		0.38	kg
--------------	--	------	----