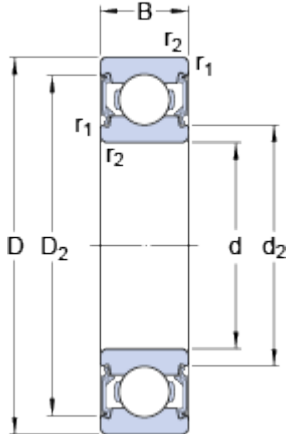


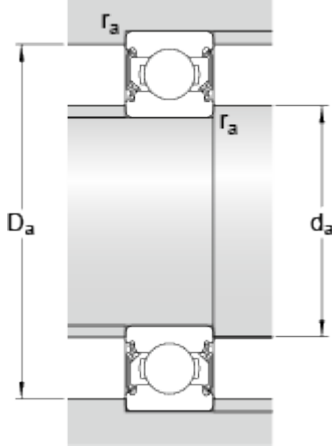
6201-2RSL

Dimensions



d		12	mm
D		32	mm
B		10	mm
d ₂	≈	16.2	mm
D ₂	≈	27.34	mm
r _{1,2}	min.	0.6	mm

Abutment dimensions



d _a	min.	16.2	mm
d _a	max.	16.5	mm
D _a	max.	27.8	mm
r _a	max.	0.6	mm

Calculation data

Basic dynamic load rating	C	7.28	kN
Basic static load rating	C	3.1	kN
Fatigue load limit	P _u	0.132	kN
Reference speed		50000	r/min
Limiting speed		26000	r/min
Calculation factor	k _r	0.025	
Calculation factor	f	12	

Mass

Mass bearing		0.037	kg
--------------	--	-------	----