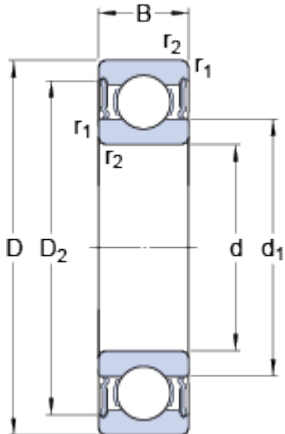


# 61821-2RS1

## Dimensions



d		105	mm
D		130	mm
B		13	mm
d <sub>1</sub>	≈	112.5	mm
D <sub>2</sub>	≈	124.4	mm
r <sub>1,2</sub>	min.	1	mm

## Abutment dimensions



d <sub>a</sub>	min.	110	mm
d <sub>a</sub>	max.	112	mm
D <sub>a</sub>	max.	125	mm
r <sub>a</sub>	max.	1	mm

## Calculation data

Basic dynamic load rating	C	20.8	kN
Basic static load rating	C	19.6	kN
Fatigue load limit	P <sub>u</sub>	1	kN
Limiting speed		2800	r/min
Calculation factor	k <sub>r</sub>	0.015	
Calculation factor	f	13.2	

## Mass

Mass bearing		0.33	kg
--------------	--	------	----