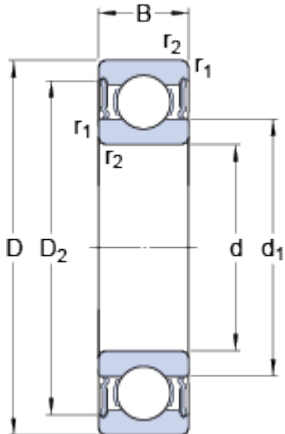


# 61813-2RS1

## Dimensions



d		65	mm
D		85	mm
B		10	mm
d <sub>1</sub>	≈	71.4	mm
D <sub>2</sub>	≈	80.5	mm
r <sub>1,2</sub>	min.	0.6	mm

## Abutment dimensions



d <sub>a</sub>	min.	68.2	mm
d <sub>a</sub>	max.	71.5	mm
D <sub>a</sub>	max.	81.8	mm
r <sub>a</sub>	max.	0.6	mm

## Calculation data

Basic dynamic load rating	C	12.4	kN
Basic static load rating	C	12.7	kN
Fatigue load limit	P <sub>u</sub>	0.54	kN
Limiting speed		4500	r/min
Calculation factor	k <sub>r</sub>	0.015	
Calculation factor	f	17	

## Mass

Mass bearing		0.13	kg
--------------	--	------	----