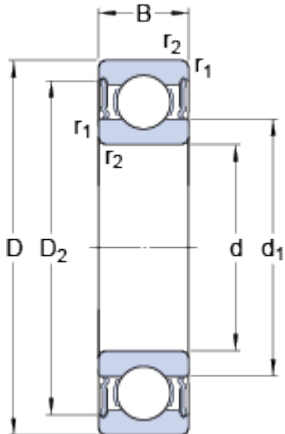


# 61804-2RS1

## Dimensions



d		20	mm
D		32	mm
B		7	mm
d <sub>1</sub>	≈	23.85	mm
D <sub>2</sub>	≈	29.4	mm
r <sub>1,2</sub>	min.	0.6	mm

## Abutment dimensions



d <sub>a</sub>	min.	22	mm
d <sub>a</sub>	max.	23.6	mm
D <sub>a</sub>	max.	30	mm
r <sub>a</sub>	max.	0.3	mm

## Calculation data

Basic dynamic load rating	C	4.03	kN
Basic static load rating	C	2.32	kN
Fatigue load limit	P <sub>u</sub>	0.104	kN
Limiting speed		13000	r/min
Calculation factor	k <sub>r</sub>	0.015	
Calculation factor	f	14.5	

## Mass

Mass bearing		0.018	kg
--------------	--	-------	----